

# 1-4. Previously On OAPC

**1-2: Psycho Killer:** Fill the grid with digits 1-6 so that each digit appears exactly once in every row and column. The puzzle is a Killer Sudoku puzzle with missing regions. Determine the regions and solve the puzzle. Each region contains its sum in the cell which is the first left cell of the topmost cells. There is no region that contains only one digit. No digit can be repeated within a sum.

**3-4: Tank:** Locate 3 tanks (2 for the example) in each grid, without touching each other even diagonally. A number in the diagram indicate the amount of tank pieces in the row and column it sees. There cannot be tank pieces on the cells with numbers.

The Psycho Killer example shows a 6x6 grid with numbers and regions. The Tank example shows a 6x6 grid with numbers and a tank shape with white circles.

**Answer format:**

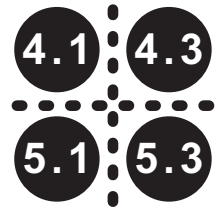
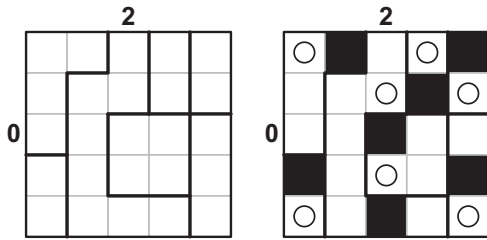
**1-2:** Write the content of the marked row/column. The answer for the example would be: 532416

**3-4:** Write the coordinates of white circles in each tank, from top left to bottom right. The answer for the example would be: B2, E5

The Tank puzzle grid is a 10x10 grid with numbers and a tank shape. The tank shape is a 2x2 square with white circles at (B,2) and (E,5).

### 5-8. Hide and Seek

The grid is divided into some regions. Locate one blackened cell and one circle in each region so that all unblackened cells are interconnected and no circle sees one another. Blackened cells cannot touch each other from the sides. The numbers outside the grid indicate the amount of circles in the corresponding directions.



*Answer format: Write the amount of the blackened squares in every row, from top to bottom. The answer for the example would be: 21121*

Top-left quadrant (5x5 grid):  
 Top: 3, 4, 2  
 Left: 3, 1, 1, 2

Top-right quadrant (5x5 grid):  
 Top: 2, 2  
 Left: 1, 3, 1

Bottom-left quadrant (5x5 grid):  
 Top: 1  
 Left: 3, 2, 1

Bottom-right quadrant (5x5 grid):  
 Top: 4, 2, 1, 1  
 Left: 3

Center intersection: 1 (top-left), 2 (top-right), 3 (bottom-left), 4 (bottom-right)



# 13-16. ± 1

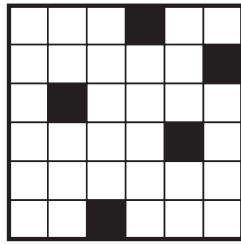
Each word in the clue list should either be added one letter or one letter taken out, in order to obtain a valid Crossword puzzle. The meanings of the words are not important. No cell may remain empty. Given clues are not necessarily in order.

**Across**

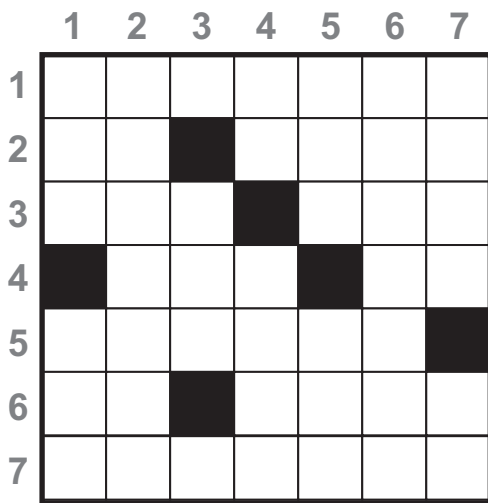
- 1- TEA, GUZU
- 2- MEZKUR
- 3- LEGEN
- 4- KABAK
- 5- RAKAM
- 6- ARA, ILIK

**Down**

- 1- KUMBARA
- 2- ZER, BABA
- 3- ULAK
- 4- KEKLIK
- 5- MAL, ERKE
- 6- ANEMI



*Answer format: Write the added or taken out letter/s every row, from left to right, top to bottom. The answer for the example would be: GTUGKLRK*

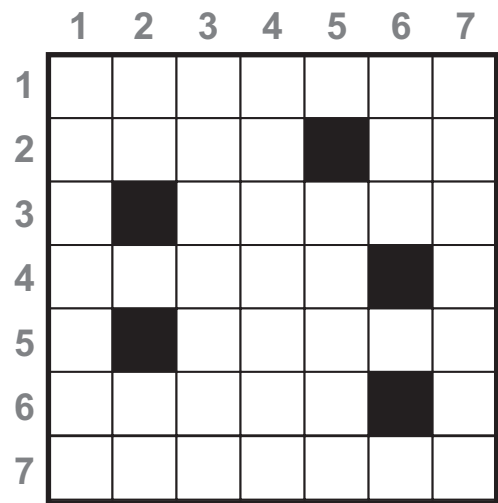


**Across**

- 1- NOVEMBER
- 2- AAR, GAM
- 3- TASA, TALK
- 4- IMAN, BUZ
- 5- ELLINCI
- 6- ISI, ASI
- 7- MUKEMMEL

**Down**

- 1- NAAS, ERIM
- 2- OLASILIK
- 3- AL
- 4- EGG, ANA
- 5- MART, CA
- 6- ELBISE
- 7- RAKUN, YIL

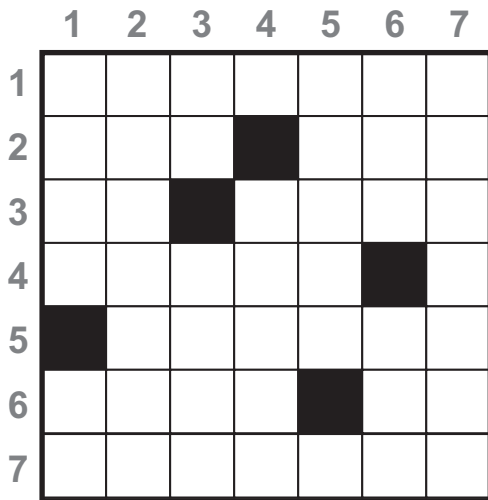


**Across**

- 1- MUMKUN
- 2- PRE, MAY
- 3- LAKURO
- 4- YEAR
- 5- UYKU
- 6- SERA
- 7- ETIKET

**Down**

- 1- PUZZLE
- 2- KUR, EST
- 3- MEMLEKET
- 4- MAKARI
- 5- UYAK
- 6- UMUR
- 7- YOGURT

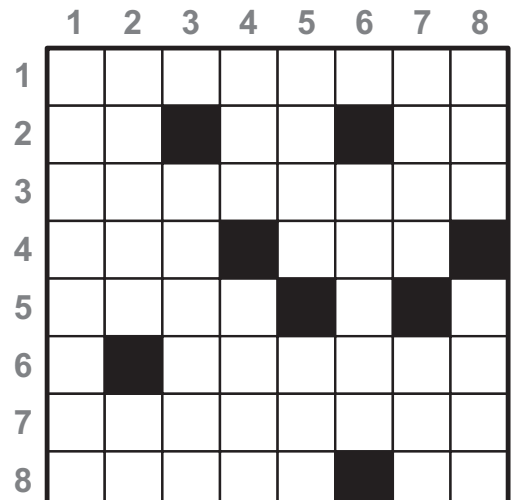


**Across**

- 1- SEQUENCE
- 2- METU, XLEM
- 3- KUT, KUB
- 4- MARQUE
- 5- EUROP
- 6- SEVEN, AZE
- 7- ALBANIAN

**Down**

- 1- EAR, SEA
- 2- ETUREB
- 3- QUA, AQU
- 4- KUNN
- 5- EXPO
- 6- NALU, NAAT
- 7- CEBREN



**Across**

- 1- TURKIYE
- 2- ASR, FAY, KAF
- 3- CEMİYET
- 4- TUNA, MERT
- 5- AKIDE
- 6- UYGUR
- 7- VETERAN
- 8- KARTEL, AZA

**Down**

- 1- ANTALYA
- 2- UFUK, AVR
- 3- EMNİYET
- 4- ASIM, DUE
- 5- KIRIM, YE
- 6- YEAR
- 7- AZ, FER
- 8- KRNAV, ERAT

## 17-20. 4x4 Minesweeper

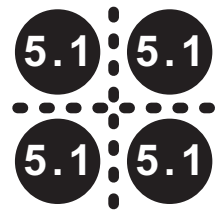
Place some mines in each diagram so that the numbers inside the grid indicate the amount of mines in the neighbouring cells. When all four puzzles are solved, every single coordinate should exactly contain one mine. The example is for two grids only.

	1	2	3	4
A		3	3	
B				
C		4		
D	2		3	

	1	2	3	4
A	2			1
B				2
C				
D		4		

	1	2	3	4
A	●	3	3	●
B	●		●	●
C	●	4		●
D	2	●	3	●

	1	2	3	4
A	2	●	●	1
B		●		2
C		●	●	
D	●	4	●	



*Answer format: For each grid, write the amount of the mines in every row, from top to bottom. The answer for the example would be: 2322, 2122*

	1	2	3	4	5	6	7	8
A		2						1
B		3	1		2	3		
C								2
D		1		1			5	
E								
F				3		3		2
G		3				1		
H				1				

	1	2	3	4	5	6	7	8
A	2			1				2
B						3		
C			3	2				
D	3				3		2	
E			5		3			
F							3	
G			2				2	
H			1		2			

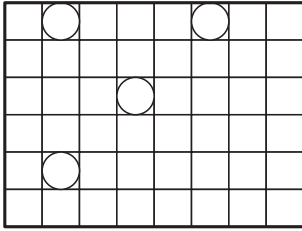


	1	2	3	4	5	6	7	8
A			1			1		
B		1		4		2		
C	2		2					
D						1		
E				3	2			
F	1		3					
G					4	3		2
H			3					

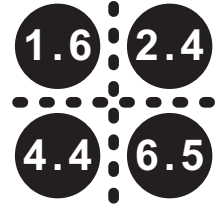
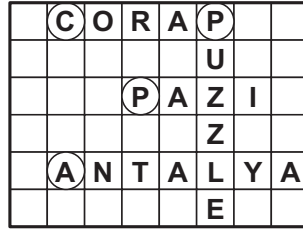
	1	2	3	4	5	6	7	8
A			2		2		2	
B		3						1
C				4		3		
D		2						
E				1		2		2
F				1	1			1
G								
H		3	1		2			2

## 21-24. First Letter

Locate the given words in the diagram, reading either from left to right or top to bottom. All words should be interconnected and there cannot exist any word which is not on the list. The circles in the diagram indicate the first letters of the words and all circles are given.

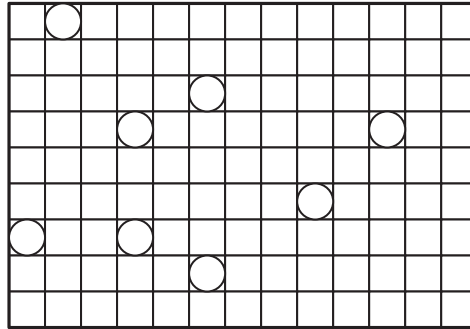
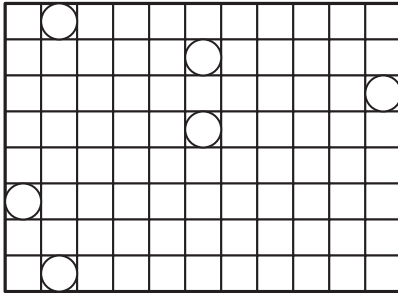


ANTALYA  
PUZZLE  
CORAP  
PAZI

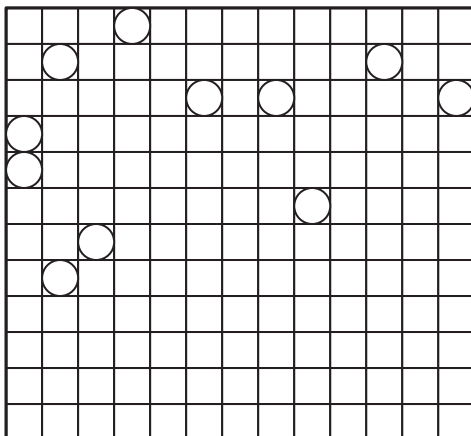


Answer format: Write the content of all circles, starting with the first row, from left to right, top to bottom. The answer for the example would be: CPPA

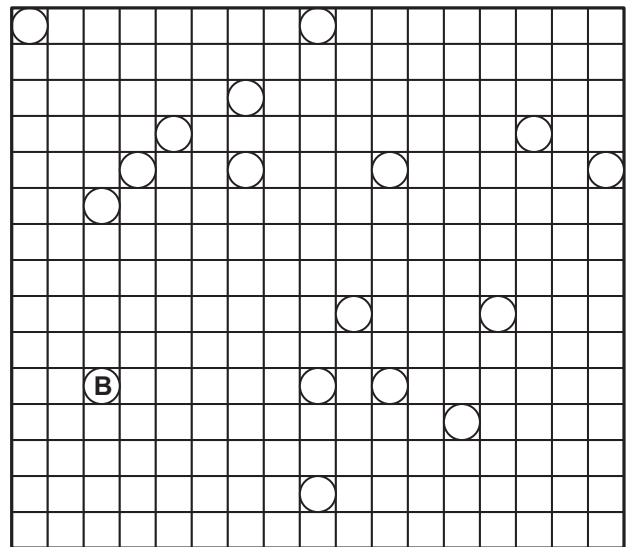
KABUL  
ANKARA  
BERLIN  
PRAGUE  
NEWDELHI  
BRATISLAVA



THOMAS  
TARO  
HIDEAKI  
MEHMET  
ULRICH  
NIKOLA  
OKA  
SHINICHI



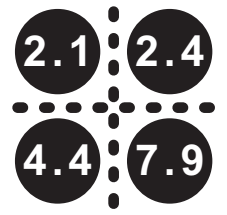
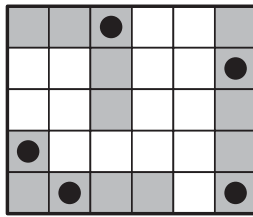
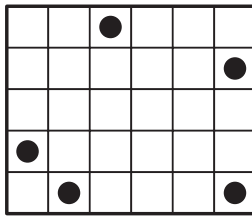
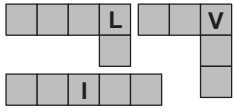
MARS  
TWIX  
MANDM  
ALBENI  
GODIVA  
KINDER  
ALIONKA  
COKONAT  
MILKWAY  
SNICKERS  
BABAEVSKIY



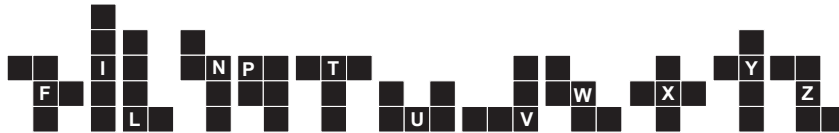
ROME  
KYIV  
PARIS  
TOKYO  
MOSCOW  
OTTAWA  
TAIPEI  
TIRANE  
VIENNA  
WARSAW  
ZAGREB  
BANGKOK  
BELGRADE  
BRUSSELS  
HELSINKI  
SARAJEVO  
BUCHAREST  
WASHINGTON

## 25-28. Hungarian Pentomino

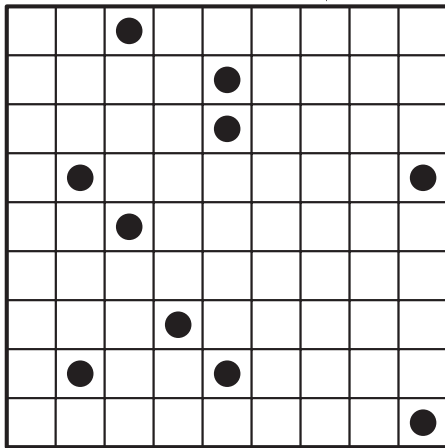
Locate the given pieces inside the diagram in such a way that they don't touch each other anywhere, not even diagonally. Pentominoes may be rotated but not mirrored. From the left to the right, next from above to the bottom of the grid every THIRD elements of the pentominoes are marked with a circle.



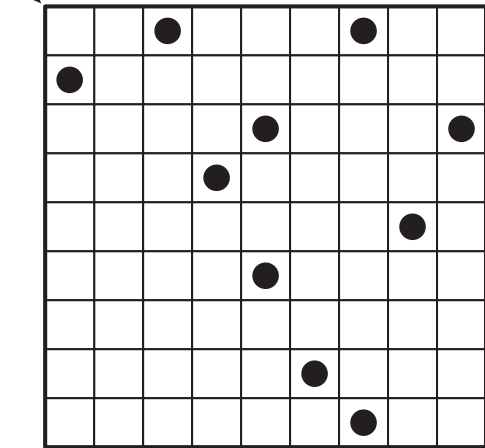
*Answer format:* Write the content of the marked row/column. Use the corresponding letters for the pentominoes and B for blackened cells. The answer for the example would be: BBVBB



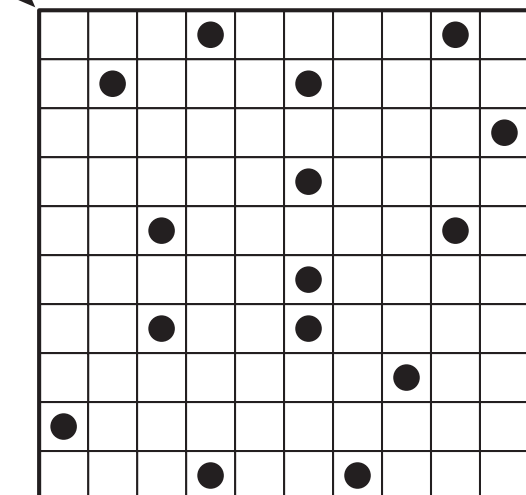
N,U,X,W,Y,Z ↓



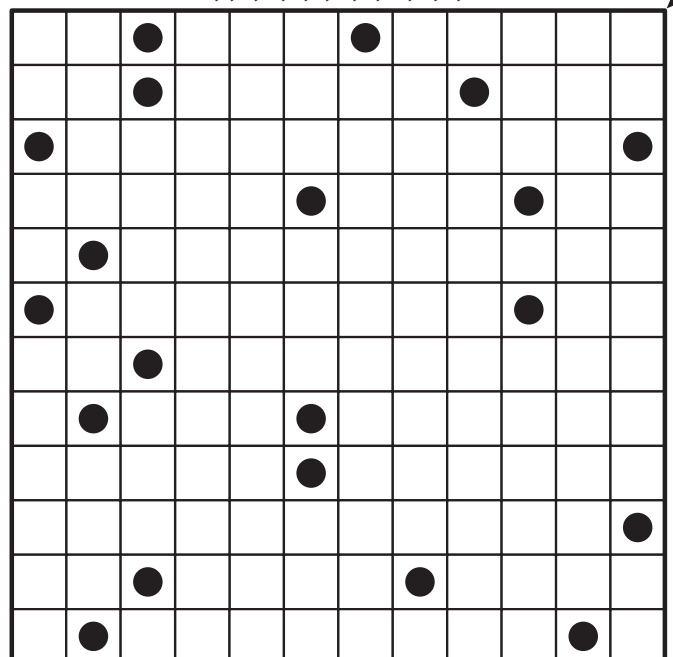
F,I,L,N,P,T ↖



F,I,L,N,P,T,U,V,Y ↖

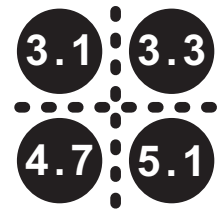
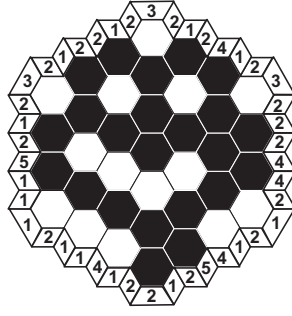
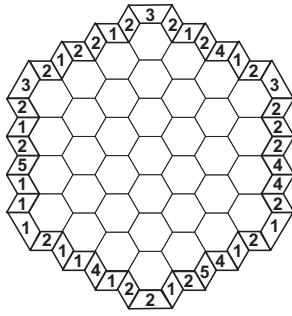


F,I,L,N,P,T,U,V,W,X,Y,Z ↗

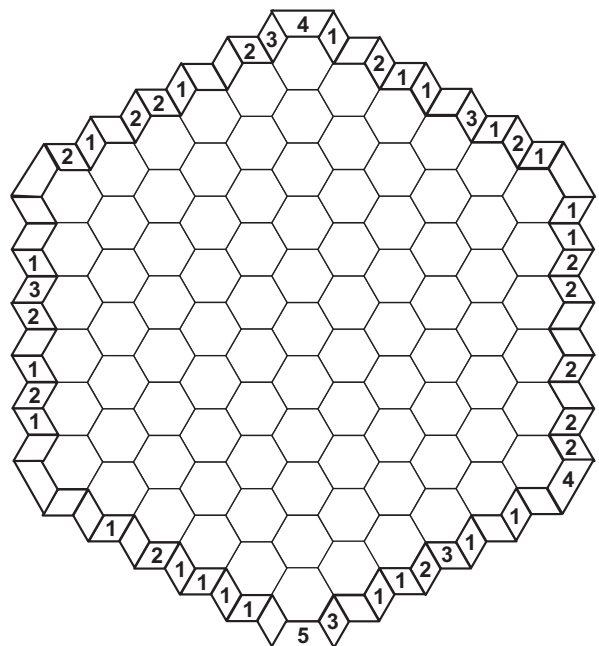
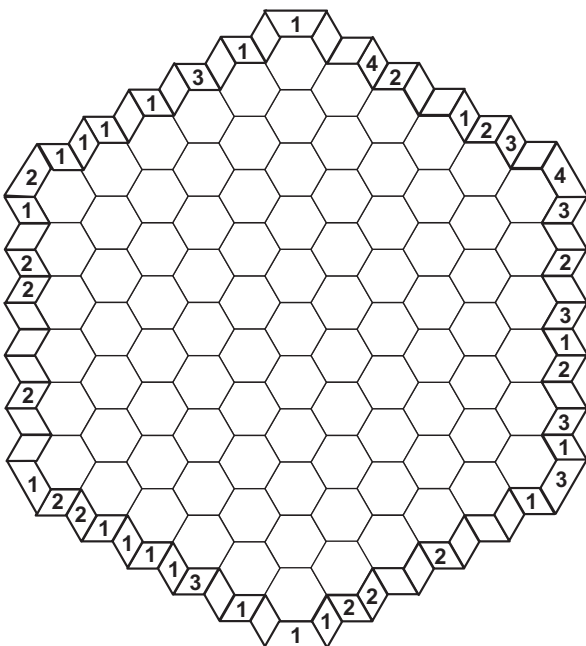
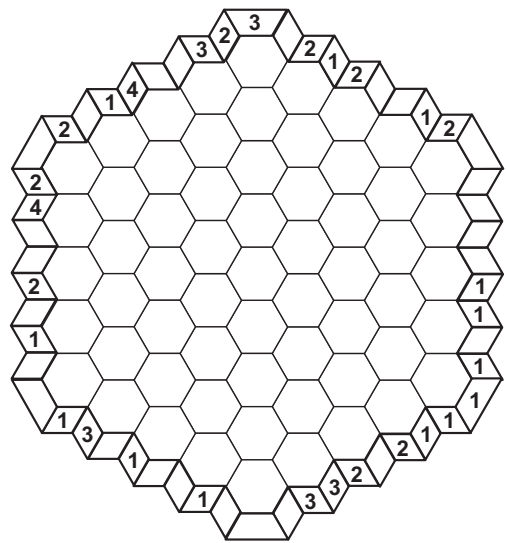
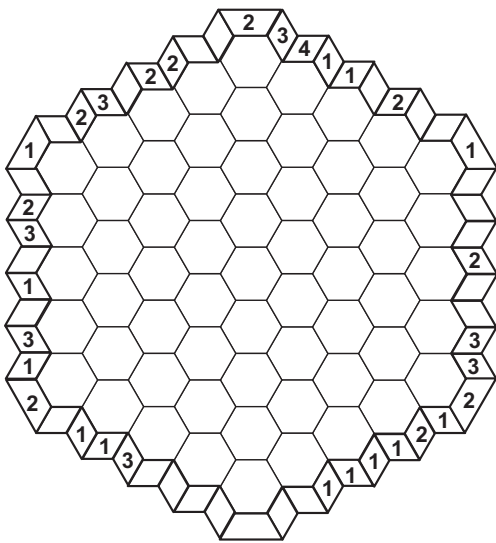


## 29-32. Hex By Numbers

Paint some cells black so that the numbers at the sides of the hexagonal grid indicate the length of the first sequence of consecutive black hexagons in each direction. All blackened cells must be interconnected.



*Answer format: Write the sizes of unpainted areas larger than 1, in increasing order. The answer for the example would be: 234*





### 33-36. Sudoku With Names

Fill in the grid with given letters so that each letter appears exactly once in every row/column/outlined region. The words outside the grid should be read in the corresponding direction, in the same order.

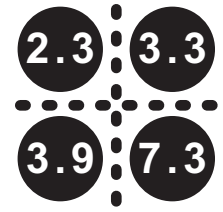
K U  
K U K T  
I R T E K  
T T E K

TURK				
KURE				
KIR				

**TURKIE**

K U  
K U K T  
I R T E K  
T T E K

R	I	K	U	E	T
E	T	U	R	K	I
K	U	R	I	T	E
I	E	T	K	R	U
U	K	E	T	I	R
T	R	I	E	U	K



Answer format: Write the content of the marked row/column. The answer for the example would be: URKTEI

M A N I  
M E G A  
I M A G E

↓

MAI				
EN				
ANIME				

**ENIGMA**

T A M  
A T O M  
M O S T

↓

RATS				
SMART				
MORT				

**MOSTAR**



G E O  
N E O  
E G O  
D O G

NED				
DINO				
ODEIN				

**DIOGEN**

N A I L  
B I T  
B U L A N T I  
S U A L I T  
B A S I T

ALTI					
SUN					
BIAT					
SABUN					
BLUNTS					
ASIT					

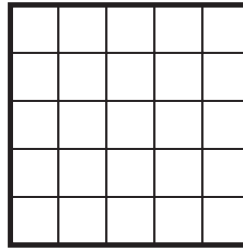
**ISTANBUL**



## 41. - + 1 Optic

Locate some of the given words in the grid. Each word in the clue list should either be added one letter or one letter taken out, in order to obtain a valid crossword puzzle. There cannot exist any one-letter word.

LA, AZI, CAM, ACUN, AMAC,  
HATA, TULU, UZUV, AYMAZ,  
HURRA, AVANAK



### Scoring:

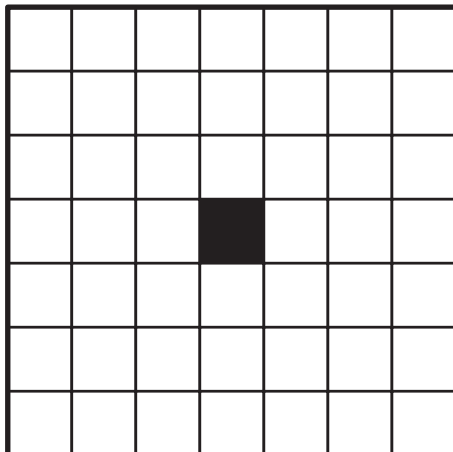
Constant value: 10 for the example  
Each letter-added word: 1 point  
Each missing-letter word: -1 point  
Each blackened cell: -1.5 point  
Each unused word: -1 point per letter.

### Scoring for the example:

$10 + (1 \times 5) - (1 \times 6) - (3 \times 1.5) = 4.5$  points

*Answer format: Write the content of every row, from left to right, top to bottom. Use “-” for the blackened cells. The answer for the example would be: HURA, AZ-CA, TULUM, AVANA, YMAZ-*

Scoring: 64 - ... points



AK  
RE

AHIR  
ALTI  
KABE  
ORTA  
RITM

ANTALYA  
TURKIYE  
KOMUTAN

ALI  
ARM  
ASA  
KIN  
KUM  
MOR  
SIM  
TUR  
ZAR

DERSHANE



Test solver: **Andrey BOGDANOV**

### The puzzle ideas are obtained as follows:

*Psycho Killer from Mehmet Murat Sevim,  
Tank from Anonymous,  
Hide and Seek from 15th JPC,  
Pentomino Islands from Ali Rıza Demirtaş,  
± 1 from 2007 Logic Korona (Romania),  
4x4 Minesweeper from Ali Aldaş,  
First Letter from 11th JPC,  
Hungarian Pentomino from G. Nagy Lazslo (7th 24 HPC),  
Hex By Numbers from WPC 2002 (Finland),  
Sudoku With Names from Riad Khanmagomedov,  
Zahlenbild-Rundweg from Nils Miehe (Rätsel Portal LM Deutschland).*